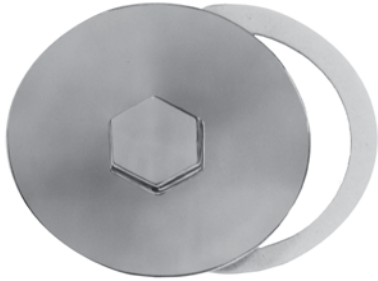




Drum Trap Plate

- 4-1/4" Diameter with gasket
- CP die cast
- 20 Threads
- Fits 3" opening



**PART
NUMBER**
1837

Extension Hoses

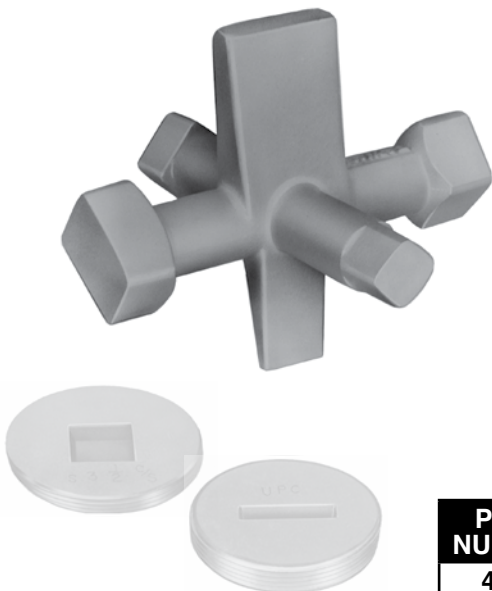
- Tire pump connections
- 1/4" Male x 1/4" Female swivel
- Note: Any length hose can be ordered. Please call for quote.



PART NUMBER	LENGTH
4759-2	2 ft.
4759-3	3 ft.
4759-4	4 ft.
4759-5	5 ft.
4759-6	6 ft.

Eureka Cleanout Plug Wrench

- This unique tool fits either slotted or square countersunk cleanout plugs
- Strong, malleable iron
- Fits slotted or square



**PART
NUMBER**
4567

**Cut Length Oakum
Oiled or White**

- Convenient, labor saving cut lengths
- Non-spitting
- Contains no tar
- Made to pack well, caulks tight
- Treated with a special compound to expand when wet



Oil Treated

PART NUMBER	DESCRIPTION
2899	1 bag with 3 strands - 27"
2897	Small box w/ 12 strands of 27" lengths
2898	Large case with 10 boxes of #2897

White - No Oil

PART NUMBER	DESCRIPTION
28100	1 bag with 14 strands - 27"