

For Commercial, Residential and Institutional Applications

Job Name _____

Contractor _____

Job Location _____

Approval _____

Engineer _____

Contractor's P.O. No. _____

Approval _____

Representative _____

Series 276H300, IWTG Hose Connection Gauges

Dial Size: 2½" (65mm)

Series 276H300 and IWTG Hose Connection Gauges are used to test water supply pressures within a distribution system. The 276H300 and IWTG gauges have red indicator hands that hold at the highest reading registered for detection of thermal expansion pressure surges. Both the 276H300 and IWTG series feature black enamel steel cases, Kostil Polymer windows, ¾" (20mm) H.T. hose connections, and copper alloy Bourdon tube sensing elements. Accuracy is ASME, Type B. Series IWTG gauges are available in a 0 to 200psi (13.8 bar) pressure rating scale. The Series 276H300 gauges are available in a 0 to 300psi (20.7 bar) pressure rating scale.



276H300

Features

- Black enamel steel case
- Kostil polymer window
- Copper alloy Bourdon sensing element
- Tin alloy welding
- ¾" (20 mm) H.T. hose connection
- ASME Type "B" accuracy

Models

276H300 – 0 - 300psi (20.7 bar) pressure rating scale

IWTG – 0 - 200psi (13.8 bar) pressure rating scale

Approvals

Certified by The Northern Certification Society of Italy
(Det Norske Verita Italia S.r.l.)

Standards

ISO 9002 quality standard

ASME B40.100

Temperature

Working Temperature: 40°F to 140°F (4°C to 60°C)

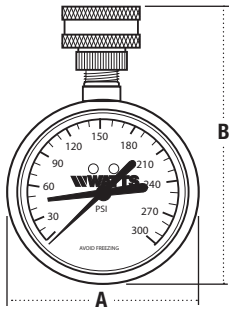
WATTS®

Watts product specifications in U.S. customary units and metric are approximate and are provided for reference only. For precise measurements, please contact Watts Technical Service. Watts reserves the right to change or modify product design, construction, specifications, or materials without prior notice and without incurring any obligation to make such changes and modifications on Watts products previously or subsequently sold.

Materials

Case: Black enamel steel
 Window: Kostil polymer
 Sensing Element: Copper alloy Bourdon tube
 Welding: Tin alloy

Dimensions – Weights



MODEL	SCALE		SIZE (DN)	DIMENSIONS				WEIGHT	
	A	B		in.	mm	in.	mm	lbs.	kgs.
276H300	0 – 300psi	20.7 bar	3/4" (20mm) Hose Thread	2 1/2	64	4	10	.3	0.14
IWTG	0 – 200psi	13.8 bar	3/4" (20mm) Hose Thread	2 1/2	64	4	10	.3	0.14



A Watts Water Technologies Company



USA: 815 Chestnut St., No. Andover, MA 01845-6098; www.watts.com

Canada: 5435 North Service Rd., Burlington, ONT. L7L 5H7; www.wattscanada.ca